

FlexMount: The Articulating Antenna Bracket

Designed by WAVEFORM in California

Have questions, need help, or feel like sharing feedback? Call 1-800-761-3041, email help@waveform.com, or book a meeting at waveform.com/meet to chat with a Waveform Signal Specialist. We'd love to hear from you!

What's In The Box

A FlexMount Bracket



B 2x U-Bolt Assemblies



C 4x Screws & Wall Anchor



D 1x 17mm Combination Wrench 1x 10mm Socket Wrench 1x 5mm Allen Wrench



Where To Mount

Poles or railings

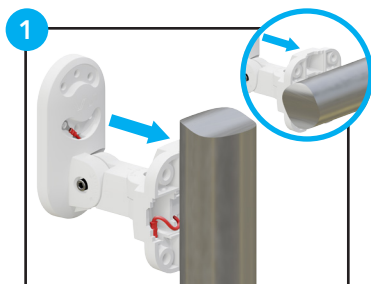
The included **U-bolt assemblies** are compatible with any pole between 1.5 and 2.5 inches (3.7 and 6.4 cm) in diameter.

Flat surfaces (walls, sidings, or fascias)

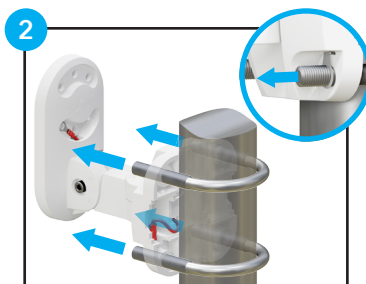
The included **screws and anchors** are compatible with any sturdy flat surface. The **anchors** insert into pre-drilled holes for hard surfaces like concrete, brick, and masonry.

Step 1. Mount FlexMount

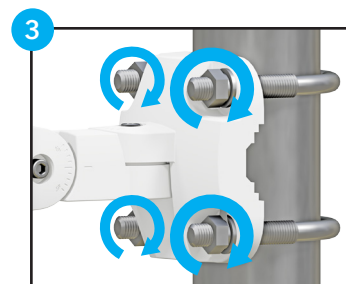
A To A Pole or Railing



Position against your vertical or horizontal **pole**.

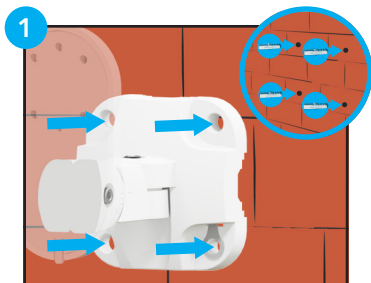


Insert the **U-bolts** through the mount's integrated **ground wire**.

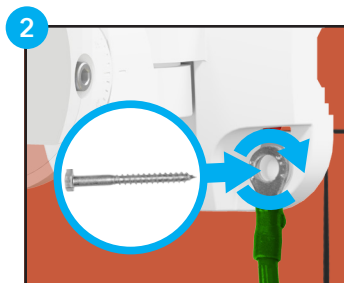


Secure each **U-bolt** with its **washers and nuts**.

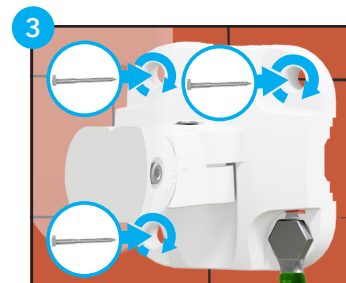
B To A Flat Surface or Wall



If necessary, drill pilot holes and insert wall anchors.

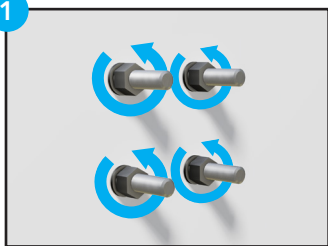


Attach a **ground to the bottom right wire** and screw into wall.



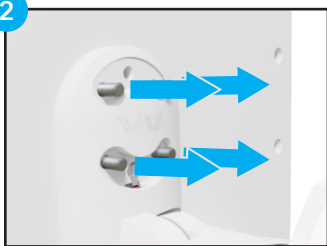
Fully secure your FlexMount with the remaining **screws**.

Step 2. Attach Antenna



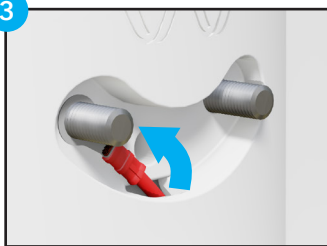
1

Remove the **washers and nuts** from your antenna.



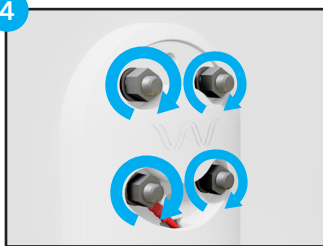
2

Place those **bolts** into your **FlexMount**.



3

Hook the **ground wire** over one of the **lower bolts**.




4

Tightly secure each **bolt** with the **washers and nuts**.


Step 3. Adjust to Aim Antenna

Adjust your FlexMount to aim horizontally and vertically using the **5mm allen wrench**.



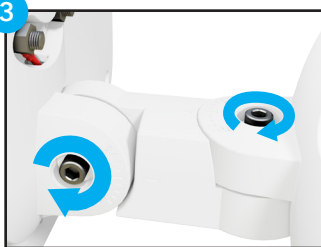
1

Loosen each **locking bolt**.



2

Rotate each **arm** to aim.

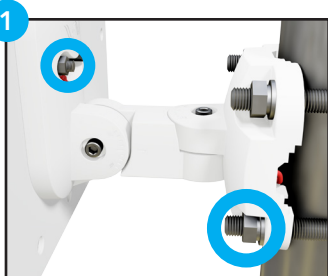


3

Tighten each **locking bolt**.

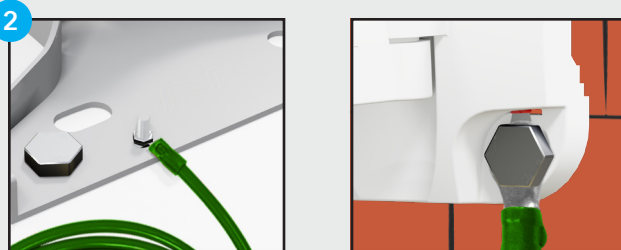
Step 4. Grounding

Ground your FlexMount to protect your equipment (it's required by the National Electric Code). Use a 10 gauge or thicker grounding wire (not included).



1

Check that your **integrated ground wire** is secured at each end.

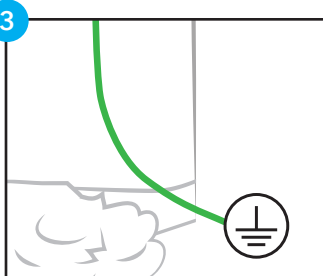


2

For pole-mounted antennas, attach the **10 AWG or thicker ground wire** to your metal pole.

or

For wall mounted antennas, attach the **10 AWG or thicker ground wire** to the grounded FlexMount screw.



3

Connect the **ground wire** (not included) to your **electrical ground**.

Grounding Tips

- If you're unsure about your grounding setup, **reach out to an electrical contractor**.
- **Learn which electrical grounds are suitable** and more at waveform.com/grounding



v1

Questions? Suggestions? Need help? Call 1-800-761-3041, or email help@waveform.com

Your FlexMount is designed, sold, and supported by Waveform and our team of Signal Specialists.

If you have any questions or feedback on how we could make this mount or manual better, **please reach out!**

We'd love to hear about your experience with our products.