

# Griddy

## The Grid Parabolic Antenna by WAVEFORM

Need Help? Have questions? Scan the QR code below or visit [setup.wf/Griddy](https://setup.wf/Griddy) to connect with our team of dedicated Signal Specialists.

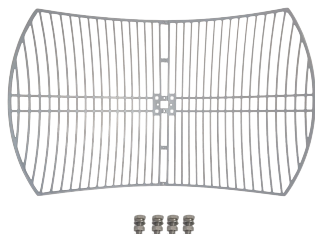
### What's In The Box

**A** 2x Grid Reflector Halves  
4x Reflector Fasteners

**B** 1x Feedhorn  
4x Feedhorn Fasteners

**C** 1x Rotational L-Bracket  
1x U-Bolt Assembly

**D** *OPTIONAL:*  
1x 30 ft RS400 N-Male Cable  
1x SMA Pigtail Adapter  
1x TS9 Pigtail Adapter  
1x U.FL Pigtail Adapter



## BEFORE YOU START!

Scan this QR code to watch the setup videos, and...

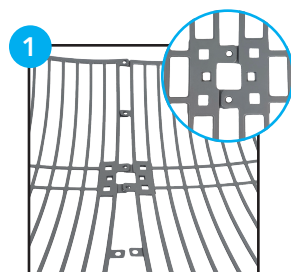
- Connect to our team of dedicated Signal Specialists - They are eager to help!
- Get your free Virtual Site Survey - including a map of cell towers and where to mount your antenna.
- Access installation guides for a wide selection of devices!
- View a digital copy of this manual.



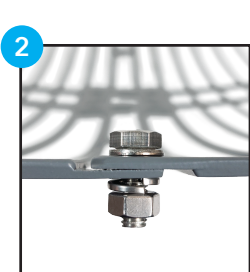
[setup.wf/Griddy](https://setup.wf/Griddy)

## Assembling Griddy

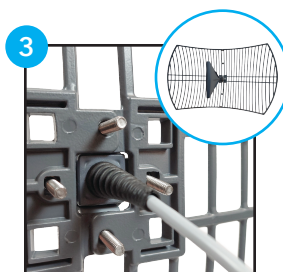
Assembling Griddy should only take a couple minutes. All you need is a 10mm wrench or pliers. Follow the steps below and reach out to us if you're unsure about anything.



1 Align the two grid halves, while ensuring the tabs overlap properly – if there's resistance, the tabs may be misaligned.



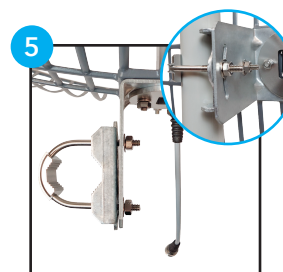
2 With the bolt head facing inward, insert each short bolt into the two upper and two lower outer holes of the grid, and fasten them.



3 With the feedhorn's indicator arrow pointing up, route its cable through the grid's center and insert each bolt.



4 Place the L-bracket over the bolts and cable, then fasten each bolt.



5 Loosely attach the U-bolt and toothed brace onto the L-bracket, then slide the assembly over the mast and fasten the U-bolt.

Well done! Your Griddy should now be assembled! See the other side of this page for directions on how to aim and more.

**Important:** It's essential to properly ground Griddy and it's mounting pole to help protect your equipment, and your home, in the event of a lightning strike. Learn more about grounding cellular antennas at [waveform.com/grounding](https://waveform.com/grounding)

## Aiming Your Griddy at Cell Towers

**Griddy has a very narrow beamwidth.** That means line of sight to the signal source is crucial and that it works best when it's aimed exactly in the direction of the signal source. If there is a tree line, try to get above it where possible as being off by just a few degrees can have a dramatic impact on your signal.

**1 Start by using a lower gain directional antenna** (like our Log Periodic Antenna) to scan for the general direction with the best signal strength (RSRP) and quality (SINR) as measured by your hotspot or booster. Use [cellmapper.net](http://cellmapper.net) as a resource for finding your nearest tower.

**2** Once you've found the approximate direction, fine-tune with Griddy by adjusting a couple degrees at a time. Try marking Griddy's mounting pole with a marker or tape to keep track of each direction you try. **Even a 1° to 2° difference in direction can make a huge difference** to signal strength and quality, so aim accurately!

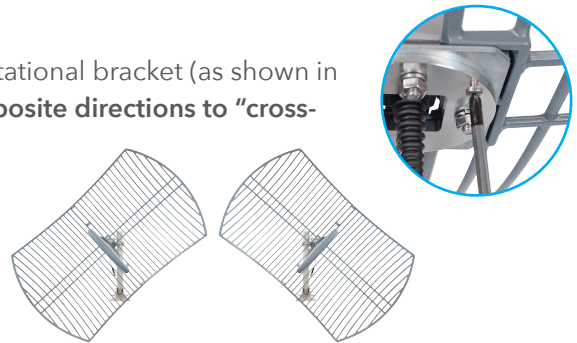
Aiming Griddy accurately can take patience, but it's worth the effort to get it right. **Reach out to us if you need help!**

## Aiming two or four Griddys for MIMO

If you're using two Griddys for 2x2 MIMO, loosen the screw on the rotational bracket (as shown in this close-up) and **pivot the antennas 45 degrees from vertical in opposite directions to "cross-polarize" them**, like in the image to the right.

You can space the antennas horizontally or vertically with a few inches between the grids - whichever is easiest for your installation.

**If you're creating a 4x4 MIMO setup with four Griddys**, space two pairs of cross-polarized Griddys a few feet apart.

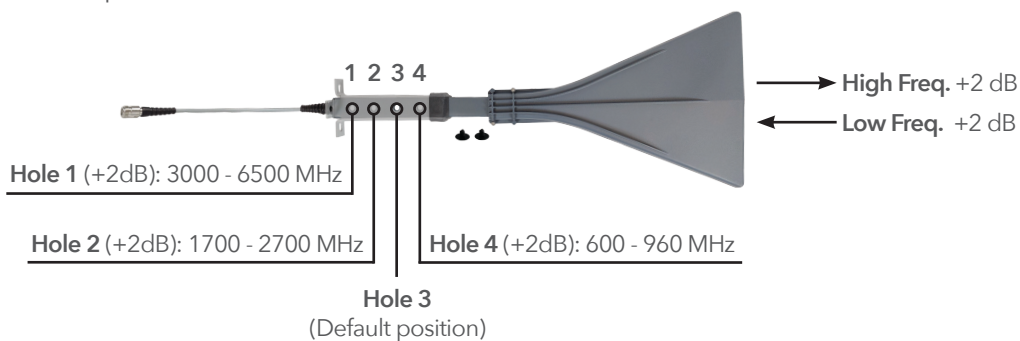


## Aiming Your Griddy for Point-to-Point WiFi

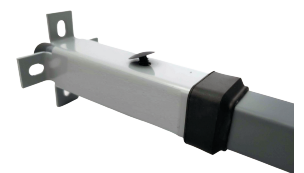
Griddy works great as a point-to-point Wi-Fi antenna! Again, we only recommend using Griddy if you have clear line of-sight between the two points. If you can see the target antenna, **align them first by eye** before moving on to fine-tuning. Even a 1°- 2° variance can make a huge difference, so aim accurately!

## Optimizing Your Griddy's Feedhorn

Need a few extra dB of gain at a specific frequency? Griddy's adjustable feedhorn allows you to **select from one of four positions** to optimize performance for a specific frequency. Just slide the inner tube until it's relevant hole (labeled 1 - 4 below) aligns with the pin hole on the outer tube.



1. Use a flat tool to remove the pins on both sides.



2. Slide the feedhorn's pin-hole to the position required and reinsert the pins.



**Love your Griddy? Refer your friends & earn 5% cash back from each order!**

They'll get 5% off their kit, and you'll earn 5% (via PayPal) when they purchase directly from [waveform.com](http://waveform.com). Visit [waveform.com/referrals](http://waveform.com/referrals) to get started!

Questions? Stuck? Need help? Scan the QR Code or visit [setup.wf/Griddy](http://setup.wf/Griddy)

Griddy is designed, sold, and supported by Waveform and our team of Signal Specialists. We can walk you through troubleshooting and fine-tuning your installation for best results.

We love helping solve tricky install problems, so please reach out!

