

Ethernet Window Entry Cable

Ultra-Thin, High Performance Pass-through Cable

BEFORE YOU START!

Scan this QR code to...

- ▶ Connect to our team of dedicated Signal Specialists.
- ▶ Access a bunch of helpful resources!
- ▶ View a **digital copy** of this manual.

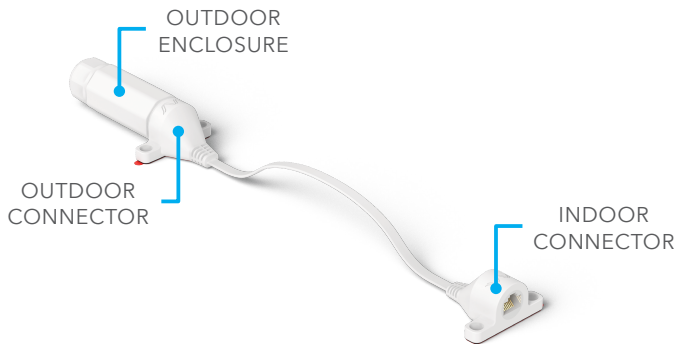


setup.wf/EWEC

Designed by WAVEFORM in the USA

What's In The Box

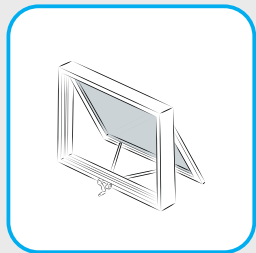
A Ethernet Window Entry Cable



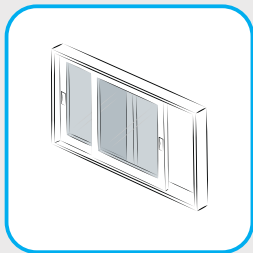
B 4x Screws & Wall Anchors



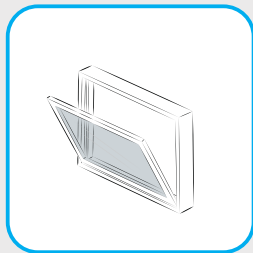
Compatible Window Types



Awning



Sliding



Hopper

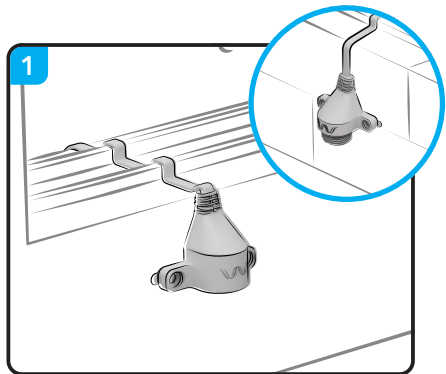


Hung

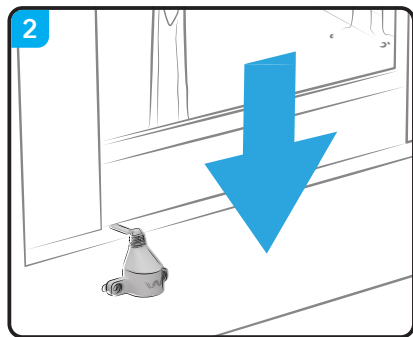


Casement

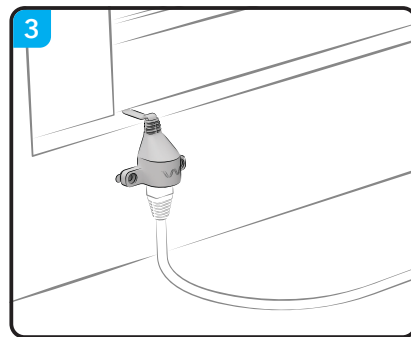
Step 1. Connect Your Window Entry Cable



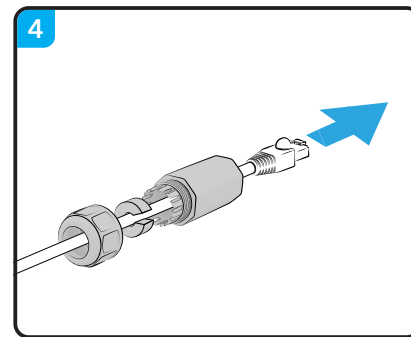
Loosely position your entry cable into your window, with its **threaded side outdoors**.



Check that your window **fully closes**. *If not, reach out to us!*



Plug your **indoor ethernet cable** into your entry cable.

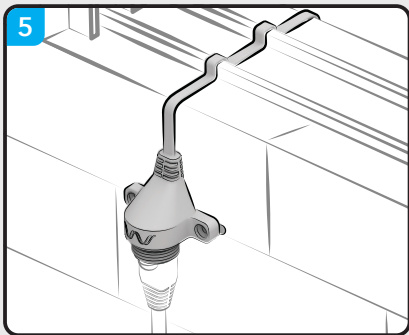


Feed your outdoor ethernet cable through your entry cable's **cap, seal, then tube**.

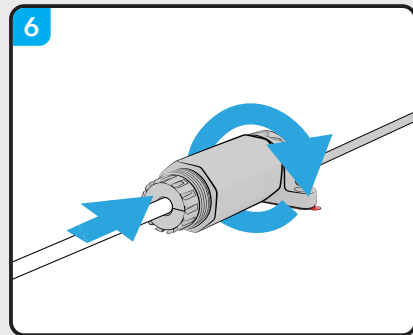
Tips

- If your window has a **window-screen**, it will need to be removed during the installation process.
- If you're installing into a sliding or hung window, **do not place the cable over the sliding rails**.

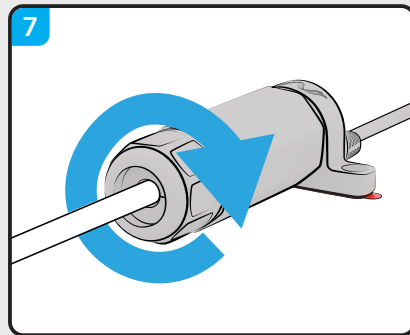
Step 1. (continued)



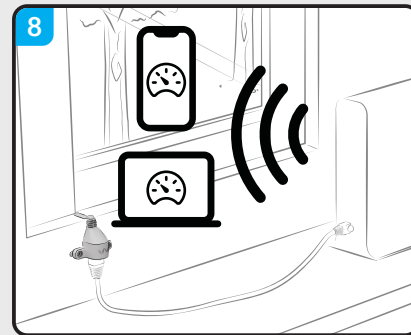
Plug your **outdoor ethernet cable** into your entry cable.



Fasten the tube onto your entry cable. Then, **push the seal** between it's forks.



Fasten the cap onto the tube.

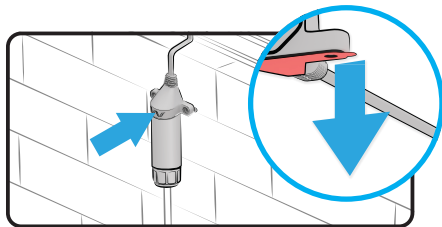


Restart your devices and perform 1-2 speed tests to test performance.

Step 2. Mount Your Window Entry Cable

A Adhesive Pads

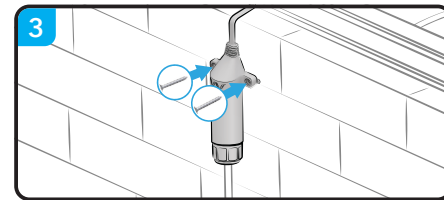
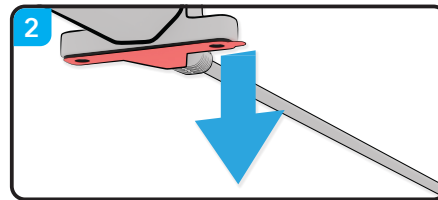
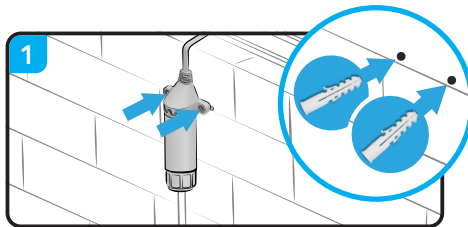
For temporary or drill-free installs



- 1 Clean and dry the surface.
- 2 Remove the adhesive film.
- 3 Firmly press the case onto the surface.
- 4 Close the window and repeat these steps indoors.

B Screws

For rough or uneven surfaces, and permanent installs



Position the case onto the **surface**.
If necessary, drill pilot holes and/
or insert the wall anchors.

For added security, perform the
adhesive pad mounting steps.

Use a phillips screwdriver to **install
the screws**. Then, close the window
and **repeat these steps indoors**.

Screw Guide

The fasteners to mount your Window Entry Cable used depend on the material it's mounted against:

For semi-soft materials (e.g. wood):

- Use the **Phillips-head wood screws**.

For hard or very soft materials (e.g. concrete/brick mortar or plaster/drywall):

- Use the **Phillips-head wood screws**, and **anchors in pre-drilled 6mm holes**.

Tip: Prior to drilling, place the footpad against the intended mounting surface and **mark the location of each hole** with a pencil or marker.

Need help? We're ready and waiting.

Your Ethernet Window Entry Cable is designed, sold, and supported by Waveform and our team of Signal Specialists.

One of the benefits of buying from Waveform is our **lifetime technical support**. We can walk you through troubleshooting and fine-tuning your installation for best results.

Simply **scan this QR code** or visit setup.wf/EWEC to **connect with our team** of dedicated Signal Specialists, access a **bunch of helpful resources**, and more!



v2.0.0



Designed by Waveform in the USA



3411 W. Lake Center Dr.,
Santa Ana, CA 92704



setup.wf/EWEC