

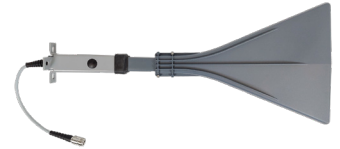
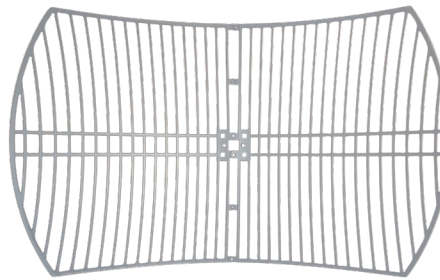
# Griddy

## The Grid Parabolic Antenna by WAVEFORM

Need Help? Call us at (800) 761-3041, email us at [help@waveform.com](mailto:help@waveform.com), or book a meeting with our support team at [waveform.com/meet](https://waveform.com/meet). We're available from 9am-5pm PT, Monday to Friday!

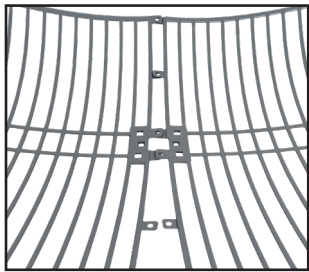
### In the Box

- 2x halves of the **Grid Reflector**
- 1x **Feedhorn**
- 1x **Reinforced Rotational L-Bracket**
- Assorted **bolts, washers, and clamps**
- **Optional parts** included with kit only:
  - 1x 30 ft RS400 coaxial cable
  - 1x TS9, 1x SMA & 1x U.FL pigtail adapter

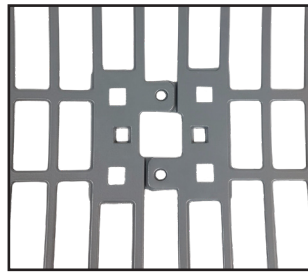


### Assembling Griddy

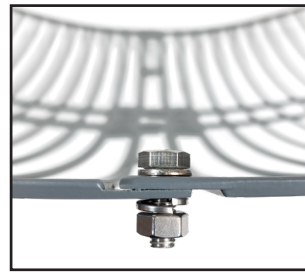
Assembling Griddy should only take a couple minutes. All you need is a **10mm wrench or pliers**. Follow the step by step guide below, and **reach out to us if you're unsure about anything**.



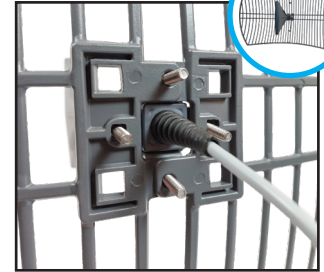
1. Bring the two halves together with the tabs overlapping.



2. Check tab alignment. Excess pressure indicates they are incorrectly aligned.



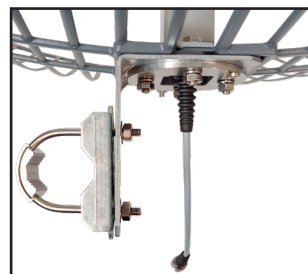
3. With the tabs aligned, secure the two halves with bolts in the four outer holes. The heads of the bolts should face inward.



4. Slide the feedhorn's pigtail through the center hole of the grid, and insert 4 bolts through the feedhorn and grid



5. Place the rotational L-bracket over the bolts and pigtail. Tighten the feedhorn, grid and bracket together with 4 nuts.



6. Loosely attach the U-bolt & toothed bracket to the L-bracket as shown.



7. Slide the assembled antenna, bracket and U-bolt over your mast, and tighten the U-bolts firmly.



8. If you need to cross-polarize the antenna, loosen the screw on the rotational mount. Tighten again afterwards



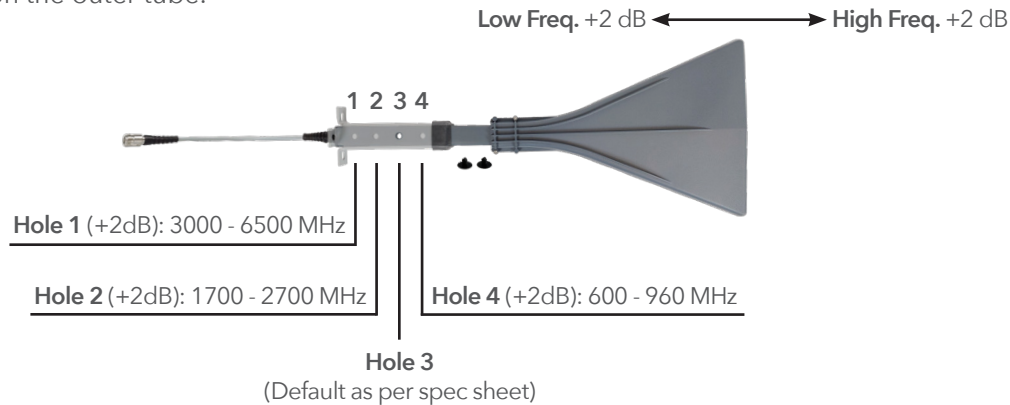
**Well done!** Your Griddy should now be assembled! **See the other side of this page for directions on aiming.**

### Pro Tips

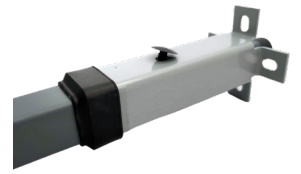
- Make sure the feedhorn is aligned vertically, with the indicator arrow pointing upwards.
- While testing different antenna positions, try marking Griddy's mounting pole with a marker or tape to act as a reference.
- Make sure to ground your antenna and the mast it's mounted to in case of lightning storm. Learn more at [waveform.com/grounding](https://waveform.com/grounding)
- Line of sight to the signal source is crucial. If there is a tree line, try to get above it where possible. Use [cellmapper.net](https://cellmapper.net) to find your nearest tower for reference.
- If you need help or aren't getting the results you expect, **please reach out to us. We love solving tricky signal situations!**

## Griddy's Feedhorn Depth Selection

Need a few extra dB of gain at a specific frequency? Griddy's adjustable feedhorn allows you to **select from one of four positions** to optimize performance for a specific frequency. Just slide the inner tube out until the relevant hole (labeled 1 - 4 below) aligns with the pin hole on the outer tube.



1. Use a flat tool to remove the pins on both sides.



2. Slide the feedhorn's pin-hole to the position required and reinsert the pins.



## Aiming Griddy at Cell Towers

**Griddy has a very narrow beamwidth.** That means it works best when it's aimed exactly in the direction of the signal source. Being off by just a few degrees can have a dramatic impact on your signal.

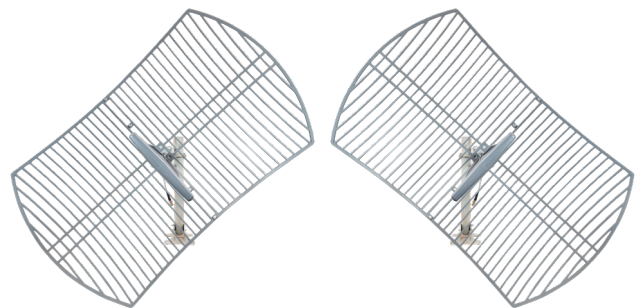
- 1 Start by using a lower gain directional antenna (like our Log Periodic Antenna) to scan for the general direction with the best signal strength (RSRP) and quality (SINR) as measured by your hotspot or booster.
- 2 Once you've found the approximate direction, fine-tune with Griddy by adjusting a couple degrees at a time. Even a 1°- 2° difference in direction can make a huge difference to signal strength and quality, so aim accurately!

Aiming Griddy accurately can take patience, but it's worth the effort to get it right. **Reach out to us if you need help!**

## Using two or four Griddys for MIMO

If you're using two Griddys for 2x2 MIMO, loosen the screw on the rotational bracket and **pivot the antennas 45 degrees from vertical in opposite directions to "cross-polarize" them**, like in the diagram on the right.

You can space the antennas horizontally or vertically with a few inches between the grids - whichever is easiest for your installation.



If you're creating a 4x4 MIMO setup with four Griddys, space two pairs of cross-polarized Griddys a few feet apart.

## Aiming Griddy for Point-to-Point WiFi

Griddy works great as a WiFi point-to-point antenna! Again, we only recommend using Griddy if you have clear line of-sight between the two points. If you can see the target antenna, then align them first by eye, before moving on to fine-tuning. Even a 1°- 2° variance can make a huge difference, so aim accurately.



Questions? Need help? Call 1-800-761-3041, or email [help@waveform.com](mailto:help@waveform.com)

Griddy is designed, sold, and supported by Waveform and our team of Signal Specialists. We've installed hundreds of these antennas ourselves, and can help fine-tune your installation for the best results.

We love helping solve tricky install problems, so please reach out!

 waveform.com