

Coax Window Entry Cable

Low-Loss, Ultra-Thin Pass-through Cable

BEFORE YOU START!

Scan this QR code to...

- ▶ Connect to **our team of dedicated Signal Specialists.**
- ▶ Access installation **guides for a wide selection of cellular routers!**
- ▶ Watch our **setup videos.**
- ▶ View a **digital copy** of this manual.

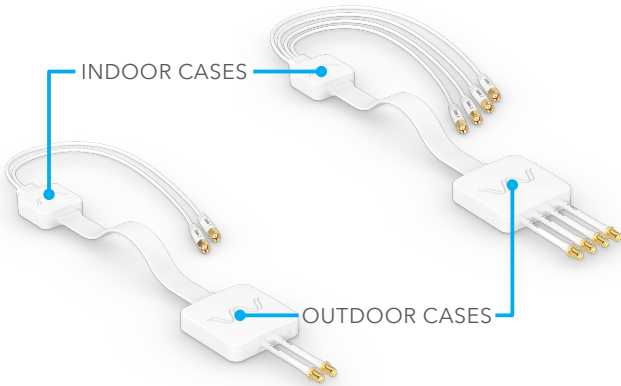


setup.wf/CWEC

Designed by WAVEFORM in the USA

What's In The Box

A Coax Window Entry Cable (Quad or Twin)



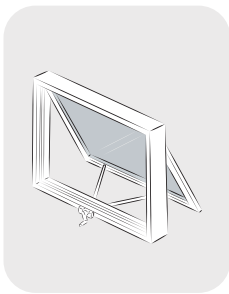
B 4x Screws



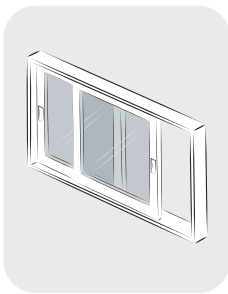
C 4x Wall Anchors



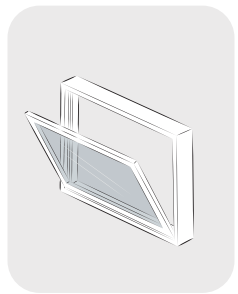
Compatible Window Types



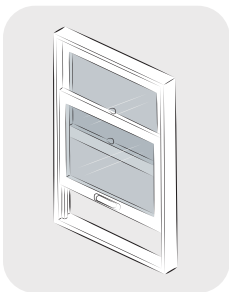
Awning



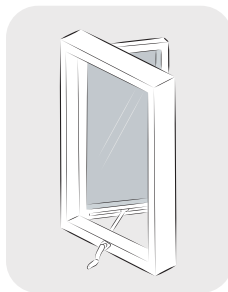
Sliding



Hopper

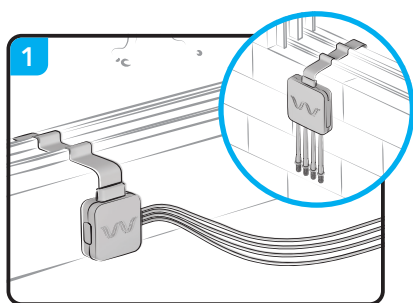


Hung

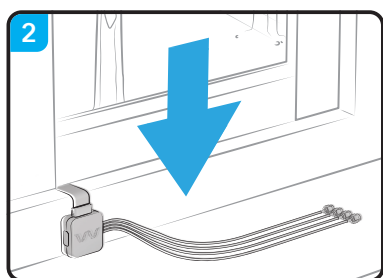


Casement

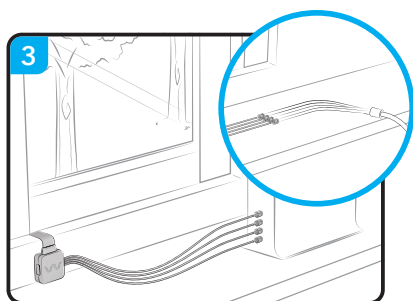
Step 1. Connect Your Cable



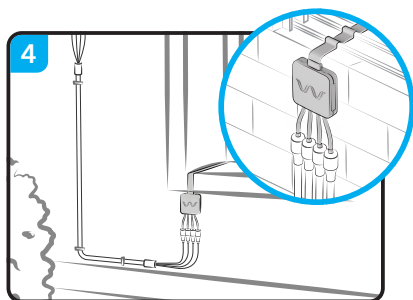
Loosely position the cable into your window frame, with its **larger case outside**.



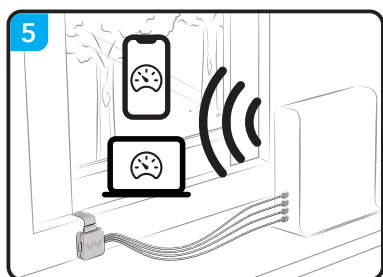
Check that your window **fully closes**. *If not, reach out to us!*



Connect its **indoor connectors** to your cellular router or extension cables.



Connect its **outdoor connectors** to your antenna or extension cables.



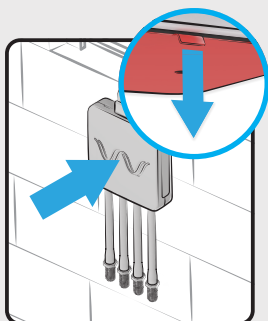
Restart your cellular router and perform 1-2 speed tests to test performance.

Tips

- If your window has a **window-screen**, it will need to be removed during the installation process.
- If you're installing into a sliding or hung window, **do not place the cable over the sliding rails**.

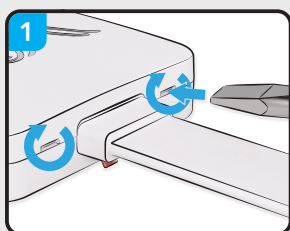
Step 2. Mount Your Cable

A Adhesive Pads For Smooth Surfaces

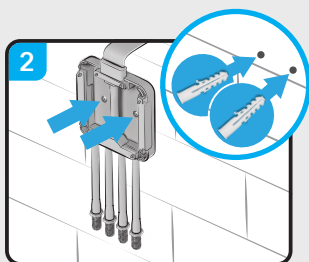


- 1 **Clean and dry** the surface.
- 2 Remove the adhesive film.
- 3 **Firmly press** the case onto the surface.
- 4 Close the window and **repeat these steps indoors.**

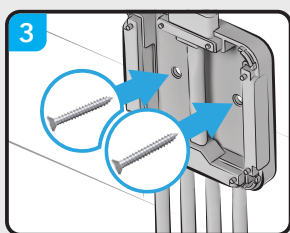
B Screws For Rough or Uneven Surfaces



Begin with the **outdoor case**. Twist a flat screwdriver inside each recess to **detach the top cover**.



Position it onto the **surface**. If necessary, drill pilot holes and/or insert wall anchors. **For added security**, use the adhesive pads.



Use a phillips screwdriver to **install the screws**. Then, reattach the top cover, close the window, and **repeat these steps indoors.**

Fastener Guide

The fasteners used to mount your Window Entry Cable depend on the material it's mounted against:

For semi-soft materials (e.g. wood):

- Use the **phillips-head wood screws**.

For hard or very soft materials (e.g. concrete/brick mortar or plaster/drywall):

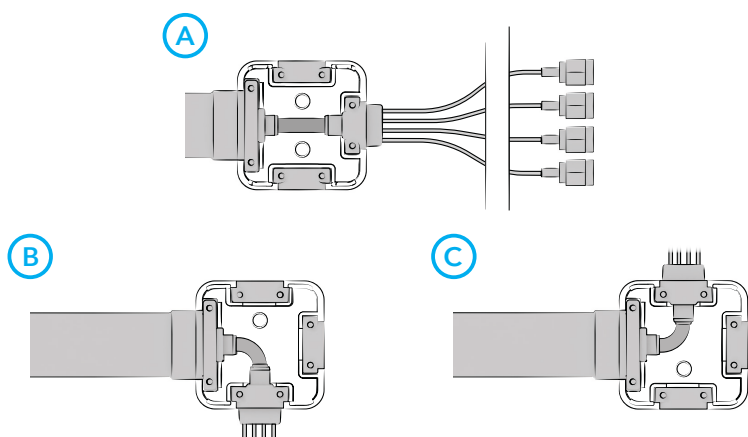
- Use the **phillips-head wood screws & anchors**.
- The anchors require a **pre-drilled 6mm hole**.

Tip: Prior to drilling, place the footpad against the intended mounting surface and **mark the location of each hole** with a pencil or marker.

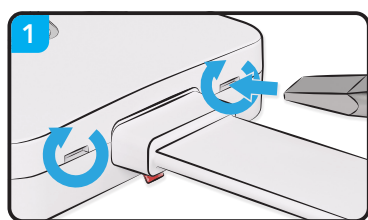
Step 3. Reposition Your Connectors (Optional)

The connectors of your Window Entry Cable can be **moved to follow your cable path** and help prevent sharp bends or strain on your cables.

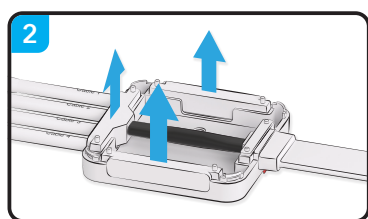
The Window Entry Cable offers **three different cable positions for each connector case**:



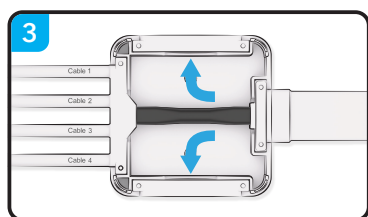
To reposition the connectors, follow these steps:



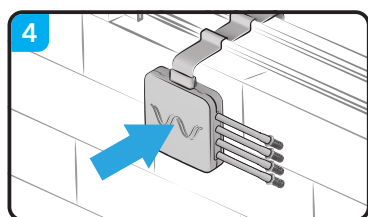
Twist a flat screwdriver inside each recess to **detach the top cover**.



Pull out the connector plate and the cover plate you wish to swap.



Place the connector plate and cover plate into their new positions.



Reattach the top cover of the case.

Need help? We're ready and waiting.

Your Coax Window Entry Cable is designed, sold, and supported by Waveform and our team of Signal Specialists.

One of the benefits of buying from Waveform is our **lifetime technical support**. We can walk you through troubleshooting and fine-tuning your installation for best results.

Simply **scan the QR code below** or visit setup.wf/CWEC to **connect with our team** of dedicated Signal Specialists, watch our **setup videos**, and more!



v3.0.0



Designed by Waveform in the USA



3411 W. Lake Center Dr.,
Santa Ana, CA 92704



setup.wf/CWEC